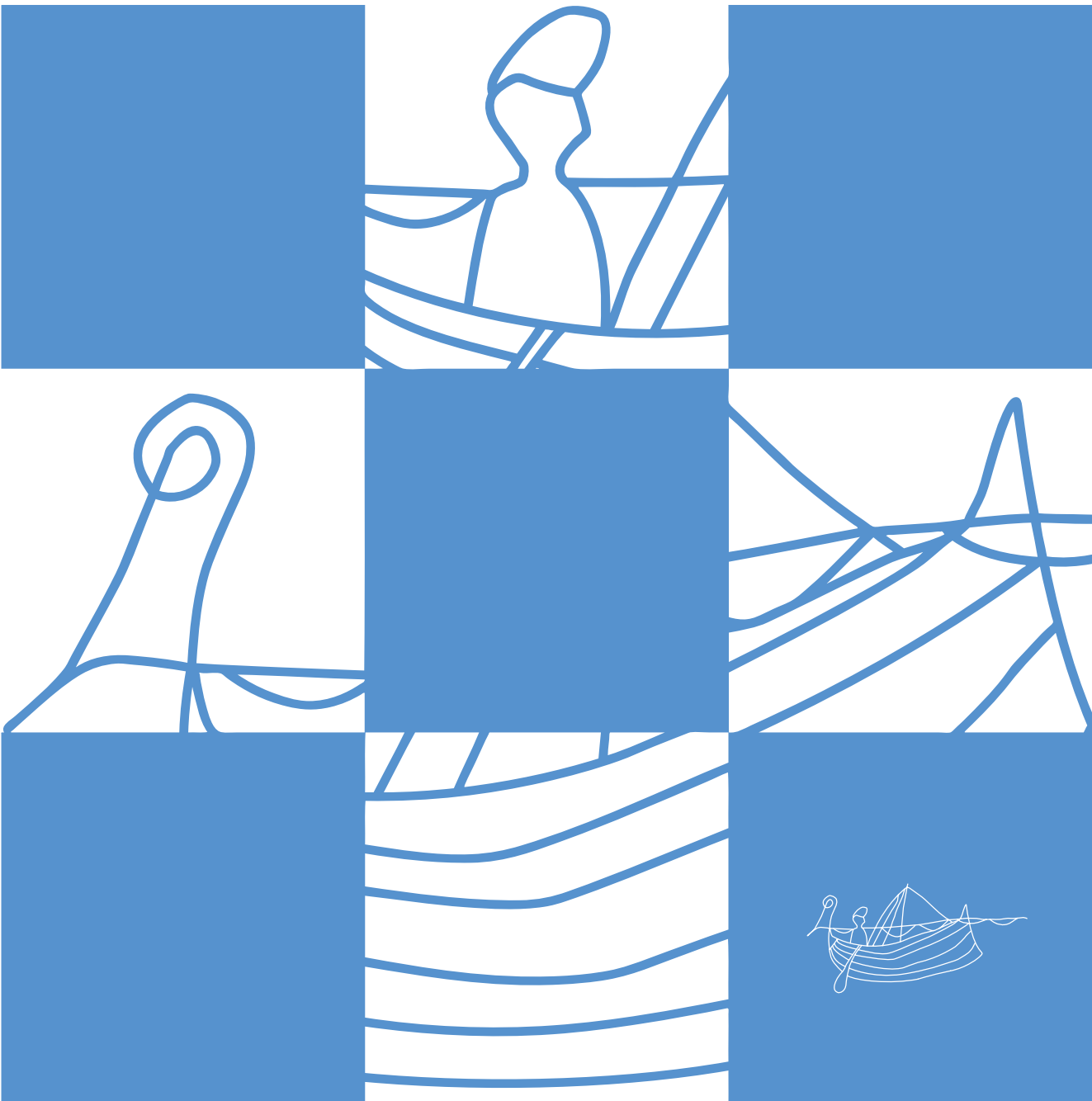


2022-2023

LUND ARCHAEOLOGICAL REVIEW



Contents

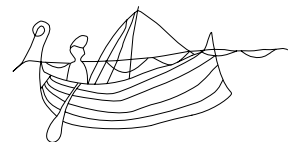
- 7 LENA BERONIUS JÖRPELAND
The crofters during the Middle Ages
- 21 BIRGITTA HÅRDH
The Hoard from the Secretaire
- 37 KRISTINA LAMM & HELEN CLARKE
From Precious Metal to Recycled Scrap
- 45 PER KRISTIAN MADSEN, THOMAS BERTELSEN,
ARNE JOUTTIJÄRVI & KARL-MAGNUS MELIN
Lead Drops Keep Falling in the Air
- 63 FREDRIK MOLIN, JONAS BERGMAN &
LINUS HAGBERG
The Source of the River – Mesolithic settlement and
ritual in relation to a changing river landscape in Motala
- 89 ANNA SÖRMAN & KARIN OJALA
Crucibles in context
- 111 JENS WINTHER JOHANNSEN
Core Point Chisels



2022-2023

LUND ARCHAEOLOGICAL REVIEW

VOL. 28-29. 2022-2023



Editors: Fredrik Ekengren och Martin Hansson

Department of Archaeology and Ancient History
Joint Faculties of Humanities and Theology
Lund University
Box 192
SE-221 00 Lund
Sweden

lar@ark.lu.se

Copyright: Department of Archaeology and Ancient History

English revised by Alan Crozier & Robert Bergman Carter

Distribution: The Publication Series in Humanities and Theology, Lund University
www.ht.lu.se/skriftserier/

Lund Archaeological Review vol. 28-29
Print ISSN 1401-2189
Online ISSN 2003-5632

Layout and print: Media-Tryck, Lund University, Lund 2024



Media-Tryck is a Nordic Swan Ecolabel
certified provider of printed material.
Read more about our environmental
work at www.mediatryck.lu.se

MADE IN SWEDEN 

Contents

- 5 LENA BERONIUS JÖRPELAND
The crofters during the Middle Ages
- 19 BIRGITTA HÅRDH
The Hoard from the Secretaire
- 37 KRISTINA LAMM & HELEN CLARKE †
From Precious Metal to Recycled Scrap
- 45 PER KRISTIAN MADSEN, THOMAS BERTELSEN,
ARNE JOUTTIJÄRVI & KARL-MAGNUS MELIN
Lead Drops Keep Falling in the Air
- 63 FREDRIK MOLIN, JONAS BERGMAN &
LINUS HAGBERG
The Source of the River – Mesolithic settlement and ritual
in relation to a changing river landscape in Motala
- 89 ANNA SÖRMAN & KARIN OJALA
Crucibles in context
- 111 JENS WINTHER JOHANNSEN
Core Point Chisels

