

PLATES



Plate I. a. Yddingen. Southern part, surrounded by beech forests. — 25.5.1947.



Plate I. b. Fjällfotajön. From the southern part near Oregården. — 24.5.1946.



Plate II. a. Börringesjön. From the middle part of the eastern shore.
30.7.1949.



Plate II. b. Havgårdssjön. View from a hill on the southern shore. — 24.5.1946.



Plate III. a. Häckebergasjön. Picture from the southern part of the lake.
17.4.1949.



Plate III. b. Svaneholmssjön. The lake is covered with floating leaves.
12.8.1947.



Plate IV. a. Krageholmssjön. Typical view from the southern part. — 13.7.1948.



Plate IV. b. Ellestasjön. In the west there are vast *Typha* reedswamps.
8.10.1949.



Plate V. a. Snogholmssjön. View from a bay south of the castle. — 9.8.1949.



Plate V. b. Sövedsjön. The western shore. In the background Salsbjer.
14.7.1947.



Plate VI. a. Heljesjön. Eastern shore. The lake was lowered in 1949. — 21.4.1949.



Plate VI. b. Vombsjön. The lake is deficient in submerged plants. — 27.5.1946.



Plate VII. a. Krankesjön. Southwestern part. The shore is gently sloping.
7.9.1946.



Plate VII. b. Gyllebosjön. It is a narrow, comparatively deep lake. — 1.6.1950.



Plate VIII. a. Tunbyholmssjön. The lake is coated with floating leaves.
1.6.1950.



Plate VIII. b. Eastern Ringsjön. Typical view from the eastern shore.
13.6.1950.



Plate IX. a. Dagstorpssjön. A beautiful lake surrounded by leafy woods.
1.7.1950.



Plate IX. b. Kvesarumssjön. Southern part with a silty shallow bottom.
11.4.1948.



Plate X. a. Tjörnarpsjön. From the eastern shore along the railway.
30.4.1949.



Plate X. b. Bosarpsjön. The water-level is always very varying. — 30.4.1949.



Plate XI. a. Hammarsjön. The shallow lake is filled up by reedswamps.
28.9.1949.



Plate XI. b. Råbelövssjön. View from a hill on the southeastern shore.
2.6.1950.

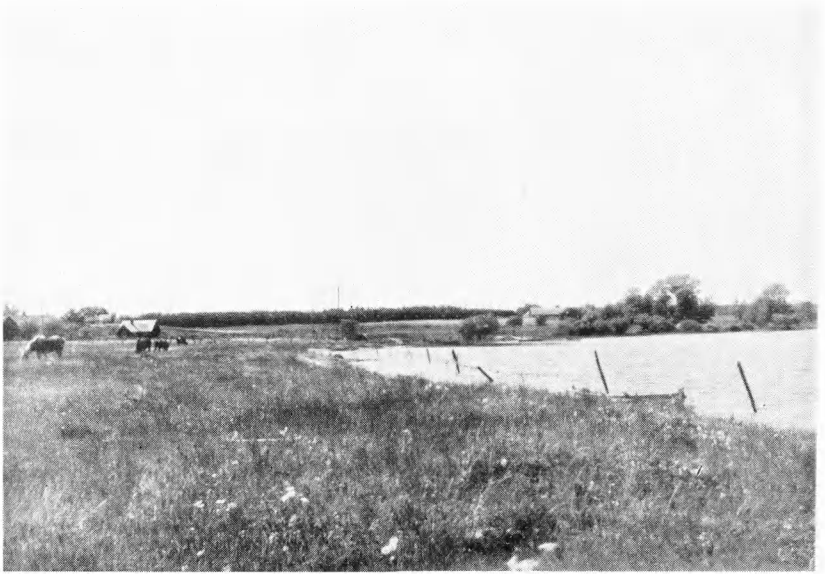


Plate XII. a. Oppmannasjön. View from the southern part at Kiaby.
2.6.1950.



Plate XII. b. Oppmannasjön. From the middle part, with stony shores.
2.6.1950.



Plate XIII. a. Levräsjön. The submerged vegetation extends very deeply.
13.6.1948.



Plate XIII. b. Siesjön. Northern part. In the background Ryssberget. — 6.4.1950.



Plate XIV. a. Västersjön. The lobated gently sloping shore in the south.
24.4.1948.



Plate XIV. b. Rösjön. The appearance resembles that of Västersjön.
24.4.1948.